

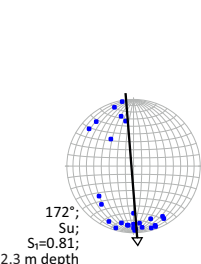
**118-24-026**  
Gravel pit, sub-vertical wall  
Elevation: 274 m (surface)  
Easting: 681513 Northing: 5530143 (NAD84, Zone 14)

#### Ice-flow data

#### Interpretation

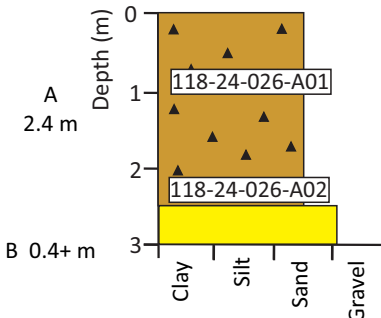
#### Bed

#### Description



Till

Proglacial  
sand and gravel (?)



A: diamict; light yellow brown (2.5Y 6/3), clayey sandy silt matrix with 10–15% clasts at sample A01 and 15–20% clasts at sample A02 (pebble-sized, subangular), massive, moderate compaction, minor blocky structure. Rotten granites present.

B: gravelly sand, brown, poorly sorted, massive, matrix-supported, medium to coarse-grained sand matrix with 30–40% clasts that are granule to large pebble-sized and subangular.

#### A-axis clast fabric

Su = spread unimodal modality  
S<sub>1</sub> = principal eigenvalue

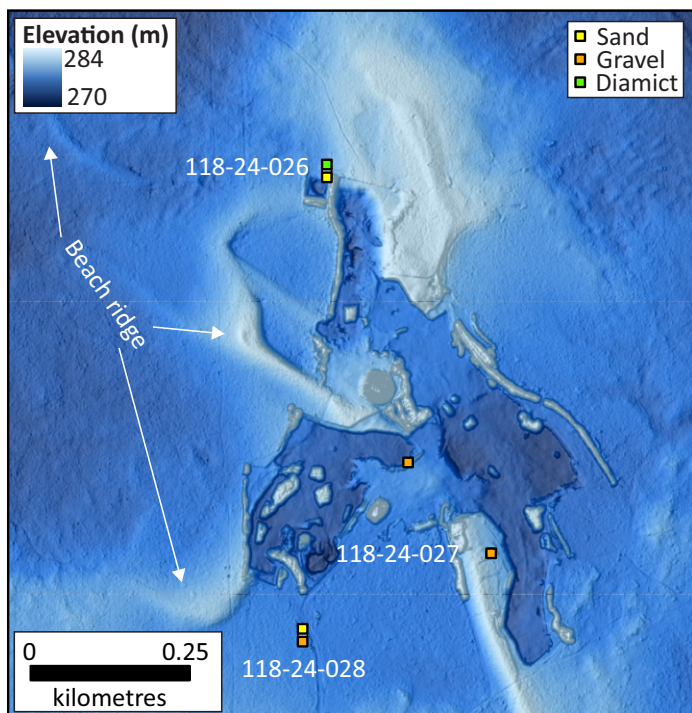


118-24-026 - Bed A diamict

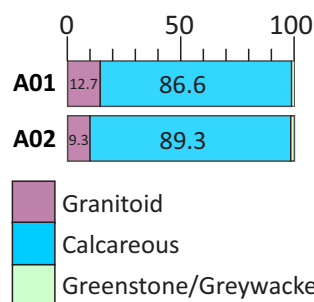


Bed A diamict

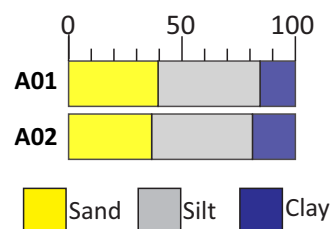
Bed B sand exposed at pit base



#### Simplified till clast-lithology (ct. %)



#### Till-matrix texture (wt. %)



#### Till-matrix total carbonate (wt. %)

A01 59.8%  
A02 59.1%